



Lake County  
General Health District

---



**Public Health**  
Prevent. Promote. Protect.

# 2019 Lake County Community Health Needs Assessment

---

## Executive Summary



# Table of Contents

<b>1. Introduction</b>	<b>1</b>
1.1 Background	1
1.2 Acknowledgments	2
1.3 Agency Overview	3
1.4 Community Served	4
<b>2. Lake County Health Concerns</b>	<b>6</b>
2.1 Access	7
Access to Care	7
Access to Healthy Foods	8
Fast Food Restaurant Density	9
Preventable Hospitalizations	10
2.2 Chronic Disease	11
Alzheimer’s Disease	11
Diabetes	12
Heart Disease	13
High Blood Pressure	14
Obesity	15
2.3 Injury	16
Fall Deaths	16
2.4 Mental Health and Addiction	17
Alcohol Abuse	17
Alcohol-related Deaths	18
Alcohol-related Driving Deaths	19
Drug Overdose Deaths	20
Mental Health	21
Preventable Teen Deaths	22
<b>3. Prioritization of Health Concerns</b>	<b>23</b>

# 1. Introduction

## 1.1 Background

In an effort to improve the health of Lake County residents, as well as maximize resources, avoid service duplication, and enhance community agency collaboration and coordination, Lake Health and Lake County General Health District have brought together county social service agencies and non-profit partners to perform the first ever combined Lake County Community Health Needs Assessment.

Identifying social, biological, and environmental factors that influence health at a population level is of increasing focus for both the public health and health care systems, and the community health needs assessment is a powerful tool to determine how these factors impact the health-related needs of a community. Health needs are identified through a systematic collection and analysis of both qualitative and quantitative information, and are accompanied by a community health improvement plan that describes the actions each partner will take to address the identified needs.

In summary, both the community health needs assessment and community health improvement plan enable Lake County communities to address the health of its residents in an informed and meaningful way. Lake Health, Lake County General Health District, and all of the participating partners are committed to this process and to improving the health of Lake County residents.

Conduction of a community health needs assessment every three years is required for non-profit hospital systems to retain their respective Internal Revenue Service 501(c)(3) status. Local health departments seeking accreditation from the Public Health Accreditation Board are required to conduct a community health assessment every five years, and the Ohio Department of Health requires the conduction of a community health assessment every three years.

Planned in coordination with 11 local partners and stakeholders and funded by Lake Health, the health assessment was conducted by the Lake County General Health District's Office of Health Policy and Performance Improvement, and included the collection and analysis of both quantitative and qualitative data. Data collection activities included:

1. Collection of 121 secondary data measures from nationally recognized and publicly available data sources.
2. Distribution of a 93-question survey distributed to current Lake County residents in both electronic and paper formats, in both English and Spanish languages.
3. Distribution of a nine-question survey to 40 Lake County mayors, city managers, commissioners, and community agency directors.
4. Conduction of five community resident focus groups, in order to provide additional qualitative context for health issues identified in the resident surveys.

# 1. Introduction

## 1.2 Acknowledgments

Several Lake County community partners comprised the 2019 Lake County Community Health Needs Assessment Steering Committee, including:

### **Lake County Alcohol, Drug, and Mental Health Services Board**

Kimberly Fraser, *Executive Director*  
Danette Richards, *Triage Specialist*

### **Lake County Commissioner's Office**

Donna Tyson, *Project Coordinator*

### **Lake County Council on Aging**

Jennifer McLaughlin, *Manager, Lake County Aging and Disability Resource Center*

### **Lake County General Health District**

Ron Graham, *Health Commissioner*  
Christine Margalis, *Quality Assurance and Special Projects Coordinator*  
Dr. Matthew Nichols, *Director, Office of Health Policy and Performance Improvement*  
Jessica Wakelee, *Policy, Research, and Planning Coordinator*

### **Lake County United Way**

Jennifer McCarty, *President, Chief Executive Officer*

### **Lake Health**

Dino DiSanto, *Vice President, Marketing and Government Affairs*  
Rick Cicero, *Senior Vice President, Business Development*

### **Lake Metroparks**

Elizabeth Mather, *Chief of Technology*  
Allison Ray, *Environmental Planner*

### **Lakeland Community College**

Dr. Karen Gravens, *Program Director, Nursing*  
Dr. Deborah Hardy, *Dean for Health Technologies, Associate Provost for Teaching and Learning, Dean of Faculty*

### **Laketrans**

Ben Capelle, *Chief Executive Officer*

### **Signature Health**

Mary Wynne-Peaspanen, *Director, Sexual and Reproductive Health Operations*  
Ann Mason, *Chief Operating Officer*

### **YMCA of Lake County**

Alyssa Gustwiller, *Chief Operating Officer*  
Beth Horvath, *Director, Healthy Living*

# 1. Introduction

## 1.3 Agency Overview

### Lake Health

Lake Health is a private, non-profit health care system located in Northeast Ohio. The largest private employer in Lake County, Lake Health was founded in 1902 by the New Connecticut Chapter of the Daughters of the American Revolution, and is committed to providing the highest quality health care to residents in and around Lake County, Ohio, by way of a comprehensive network that includes 600 physicians, 2,600 health care professionals, approximately 1,000 volunteers, and 11 health care facilities, including two hospital campuses: West Medical Center, located in Willoughby, Ohio, and TriPoint Medical Center in Concord Township, Ohio.

### Mission Statement

To provide comprehensive health care services to the residents of Lake County and neighboring communities in partnership with those who share a commitment to local access, healing with compassion, and superior quality.

### Vision Statement

Lake Health, in partnership with its medical staff, will be the first choice for superior care close to home. Together, we will coordinate a lifetime of health which patients and families experience as warm, responsive, and state-of-the-art. Our organization and culture will produce the best opportunities to practice and work.

### Lake County General Health District

Originally established in December 1919 as separate city and county agencies, respectively, Lake County General District and Painesville City District merged in 1984 to form the Lake County General Health District, the county's sole health district. Located at 5966 Heisley Road in Mentor, OH, Lake County General Health District serves Lake County's 230,117 residents with an operating budget of \$9 million and nearly 60 full-time equivalents. In line with a long history of innovative public health services, Lake County General Health District was the 14th health district to be accredited in Ohio through the Public Health Accreditation Board, and maintains a strong supportive presence in a number of surrounding counties. In January of 2018, Lake County General Health District established the Office of Health Policy and Performance Improvement to focus on local, state, and national systems change opportunities; this office was responsible for the conduction of this community health needs assessment.

### Mission Statement

Working to prevent disease, promote health, and protect our community.

### Vision Statement

Lake County citizens enjoy continually improving health and quality of life; healthy, happy, productive workforce which provides quality health services.

# 1. Introduction

## 1.4 Community Served

The service area for both Lake Health and Lake County General Health District is defined as Lake County, both in practice and for the purposes of this assessment. Secondary data utilized in this assessment was collected at the county level and compared against national, state, and comparison county figures, as well as Healthy People 2020 goals when available.

### Lake County consists of 23 political subdivisions, including:

Concord Township

Eastlake City

Fairport Harbor Village

Grand River Village

Kirtland City

Kirtland Hills Village

Lakeline Village

Leroy Township

Madison Township

Madison Village

Mentor City

Mentor-on-the-Lake City

North Perry Village

Painesville City

Painesville Township

Perry Township

Perry Village

Timberlake Village

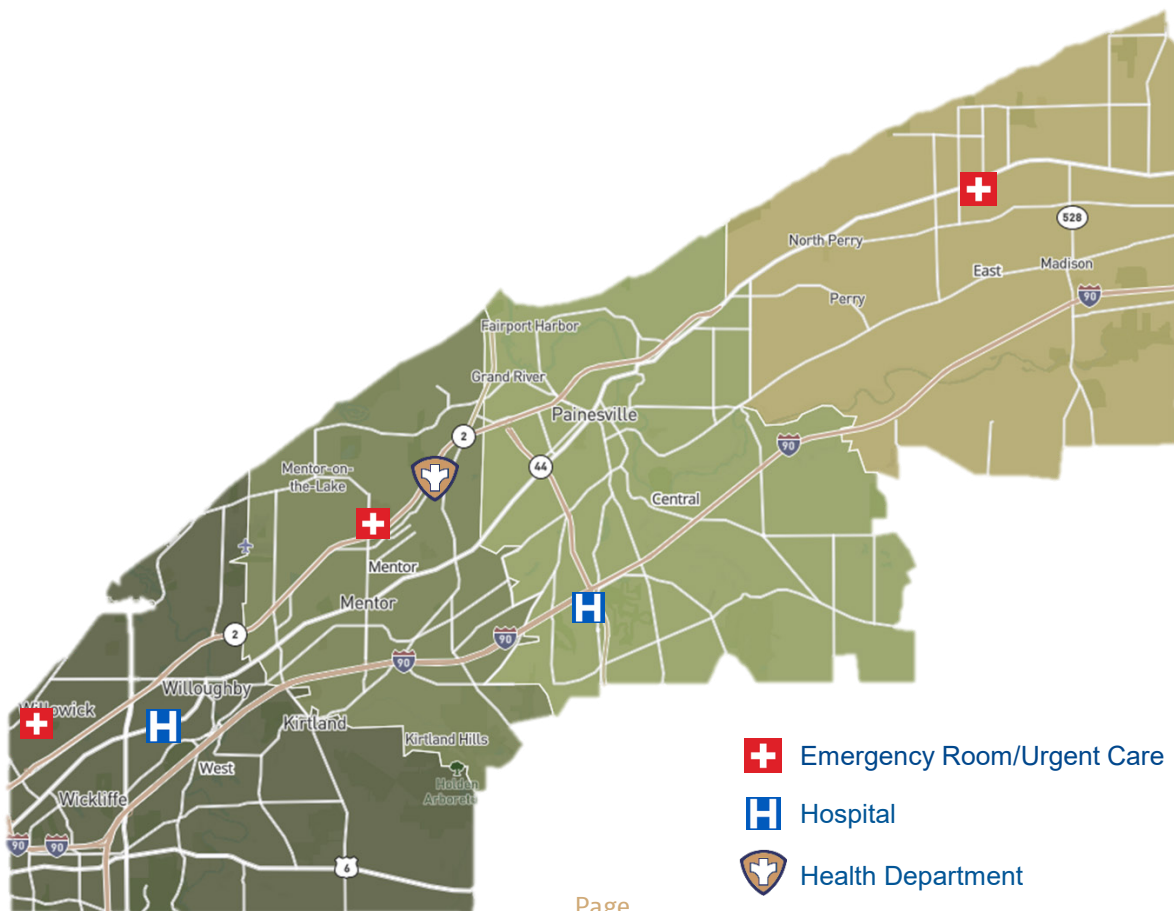
Waite Hill Village

Wickliffe City

Willoughby City

Willoughby Hills City

Willowick City



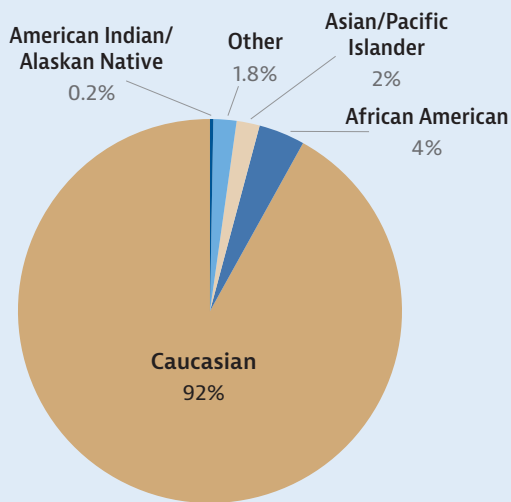
# 1. Introduction

## 1.3 Community Served

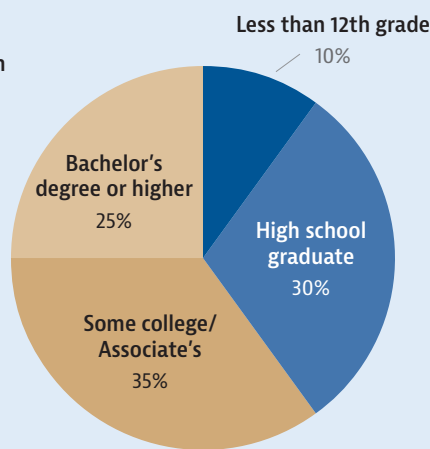
Lake County, situated along the southern Lake Erie coastline and approximately 50 miles west of the Pennsylvania state border, is home to 230,117 residents and is characterized predominately by Caucasian (92%), high school graduate (92%) homeowners (74%), with a median household income of \$59,958. One-fifth of Lake County residents are 65 years of age or older. The county seat of Painesville retains an ethnically diverse population, with upwards of 43% Hispanic residents in some census tracts, more than one-third of which are children

under 18 years of age.

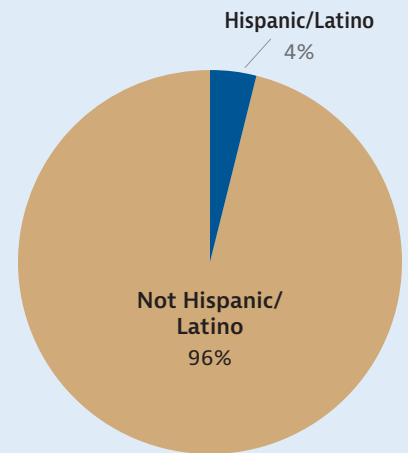
Despite retaining the smallest geographical footprint of any Ohio county, Lake County has a considerable manufacturing and retail presence across the county's 6,000 employers, 86,697 employees, and mix of urban, rural, and suburban communities. Lake County is uniquely positioned between densely urban Cuyahoga County to the west, affluent Geauga County to the south, and rural Ashtabula to the east, and is bisected by two major throughways, Ohio State Route 2 and Interstate 90.



Race



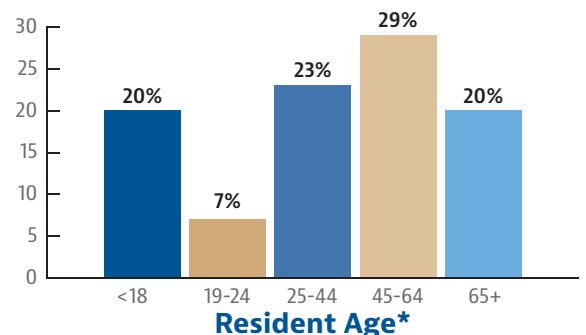
Education



Ethnicity

## Median Household Income

\$59,618



\*Does not equal 100% due to rounding



## 2. Lake County Health Concerns

In total, **16 Lake County-specific** health concerns were identified across the quantitative and qualitative components of the four assessments processes (Table 1), and included the following:

**Table 1.** Health Concerns Identified During the 2019 Lake County Community Health Assessment

Measure	Secondary Data	Resident Survey	Resident Survey (Qualitative)	Community Leader Survey	Focus Group Survey	Focus Group Themes (Qualitative)
Access to care			✓			✓
Alcohol abuse			✓			✓
Alcohol-related deaths	✓	✓	✓	✓	✓	✓
Alcohol-related driving deaths	✓	✓	✓	✓	✓	✓
Alzheimer's disease	✓	✓	✓	✓	✓	✓
Diabetes	✓	✓	✓	✓	✓	✓
Drug overdose deaths	✓	✓	✓	✓	✓	✓
Fall deaths	✓	✓	✓	✓	✓	✓
Fast food restaurant density	✓	✓	✓	✓	✓	✓
Heart disease	✓	✓	✓	✓	✓	✓
High blood pressure	✓	✓	✓	✓	✓	✓
Limited access to healthy foods	✓	✓	✓	✓	✓	✓
Mental health		✓	✓			✓
Obesity		✓	✓			✓
Preventable hospitalizations	✓	✓	✓	✓	✓	✓
Preventable teen deaths	✓	✓	✓	✓	✓	✓



# 2.1 Access

## Access to Care

The rate of primary care physicians per 100,000 population. Doctors classified as "primary care physicians" by the American Medical Association include: General Family Medicine MDs and DOs, General Practice MDs and DOs, General Internal Medicine MDs and General Pediatrics MDs. Physicians 75 years of age and older, and physicians practicing sub-specialties within the listed specialties, are excluded.

“We have hundreds of families who can't **afford** health care coverage... and at the end of the day, **everybody** deserves to be healthy and feel okay.”

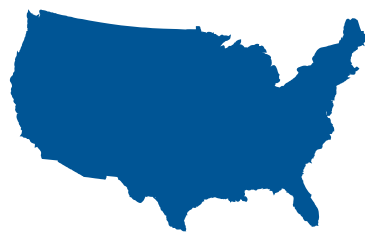
-Focus Group Participant

### National, State, and Local Data\*

\*Community Commons 2015



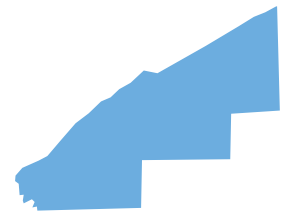
N/A



88  
per 100,000

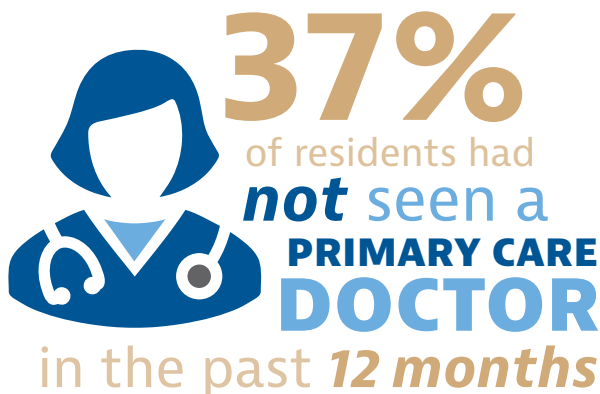


93  
per 100,000



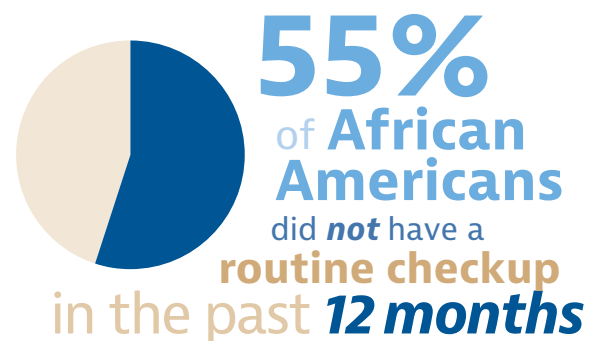
48  
per 100,000

### 2019 Resident Survey Results



### High Risk Profile\*\*

\*\*Lake County 2019 Community Health Needs Assessment Resident Survey



# 2.1 Access

## Access to Healthy Foods

The percentage of the population with low food access. Low food access is defined as living more than a half mile from the nearest supermarket, supercenter or large grocery store, and highlights populations and geographies facing food insecurity.

“And let’s be honest too, there’s no healthy food stores here...there are convenience stores on every single corner...we’ve got to figure out how to bring in low-cost food.”

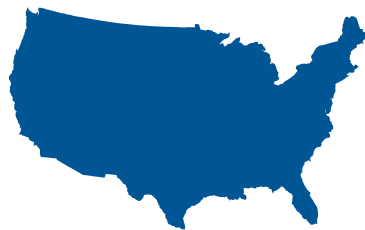
-Focus Group Participant

### National, State, and Local Data\*

\*USDA Food Access Research Atlas 2015



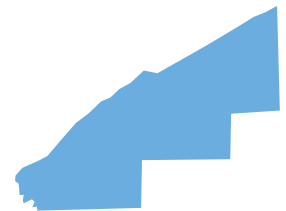
6%



22%

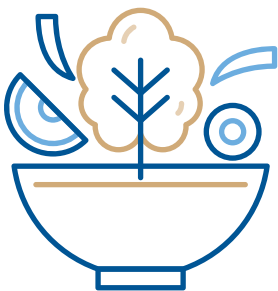


25%



40%

### 2019 Resident Survey Results



**26%**  
identified limited  
**access to**  
**HEALTHY FOODS**  
as a  
**HEALTH CONCERN**  
in *Lake County*

### High Risk Profile\*\*

\*\*Black et al. 2014



**Low income**

**Ethnic minority neighborhoods**



# 2.1 Access

## Fast Food Restaurant Density

Rate of fast food restaurants per 100,000 population. Fast food restaurants are defined as limited-service establishments primarily engaged in providing food services (except snack and nonalcoholic beverage bars) where patrons generally order or select items and pay before eating.

“We used to only have one fast food restaurant in a city. You know, one McDonalds and one Burger King... And now there’s one on every corner.”

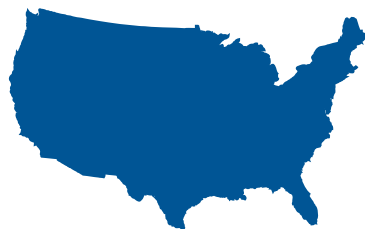
-Focus Group Participant

### National, State, and Local Data\*

\*Community Commons 2016



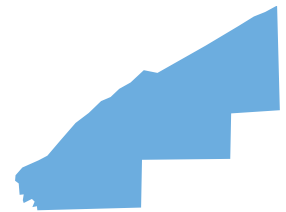
N/A



77  
per 100,000

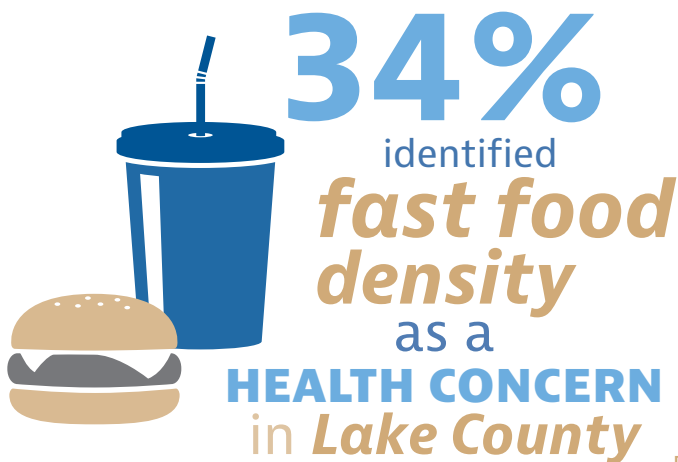


81  
per 100,000



82  
per 100,000

### 2019 Resident Survey Results



### High Risk Profile\*\*

\*\*Black et al. 2014

Ethnic minority neighborhoods



Low  
income



# 2.1 Access

## Preventable Hospitalizations

Discharge rate per 1,000 Medicare enrollees for conditions that are ambulatory care sensitive (ACS). ACS conditions include pneumonia, dehydration, asthma, diabetes, and other conditions which could have been prevented if adequate primary care resources were available and accessed by those patients.

More than **two-thirds** of Americans 65 years of age have at least two chronic conditions, and **32%** of hospitalizations among this age group are preventable.\*

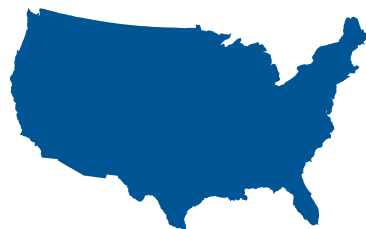
\*Dantas et al. 2016

### National, State, and Local Data\*\*

\*\*Community Commons 2015



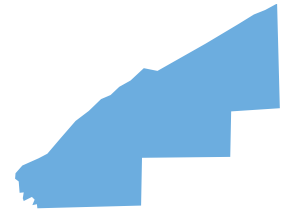
N/A



49  
per 100,000




57  
per 100,000



59  
per 100,000

**2019 Resident Survey Results**  
**29%** of residents *and* **40%** of community leaders  
*identified preventable hospitalizations*  
as a **HEALTH CONCERN**  
in *Lake County*



### High Risk Profile\*\*\*

\*\*\*Dantas et al. 2016, Doshi et al. 2017



Advancing age

Poor health behaviors

Non-Hispanic African American



Chronic condition(s)

## 2.2 Chronic Disease

### Alzheimer's Disease

Percentage of Medicare beneficiaries with Alzheimer's disease or related disorders.

“I’ve done some guardianship with the probate judge, and ended up getting a gentleman that was **homeless**, and the only reason that he ended up in probate court was because he had gotten sick...he ended up in the hospital and they couldn’t release him, so the probate court had to take over and I ended up as a guardian. He had **dementia** and he was just walking the streets for probably a year.”

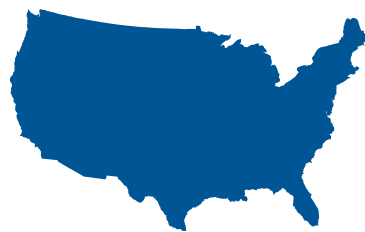
-Focus Group Participant

### National, State, and Local Data\*

\*Centers for Medicare Services 2015



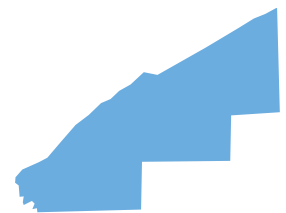
N/A



10%



10%



11%

### 2019 Resident Survey Results



**27%**  
identified  
**Alzheimer's  
disease**  
as a  
**HEALTH CONCERN**  
in **Lake County**

### High Risk Profile\*\*

\*\*Matthews et al. 2018



**African American or  
Hispanic females**

**85+ years old**



## 2.2 Chronic Disease

### Diabetes

Percentage of adults 20 years of age and older who have ever been told by a doctor that they have diabetes.

“Being diabetic and on insulin is a very, very **expensive deal**; and insurance companies, there’s only two companies that make it, and their prices are almost identical to each other, and insurance only picks up so much.”

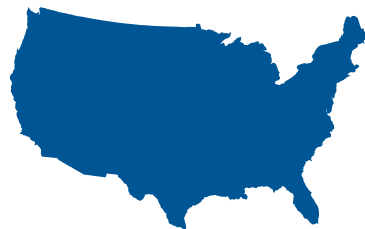
-Focus Group Participant

### National, State, and Local Data\*

\*Community Commons 2015



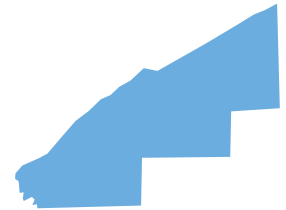
N/A



9%

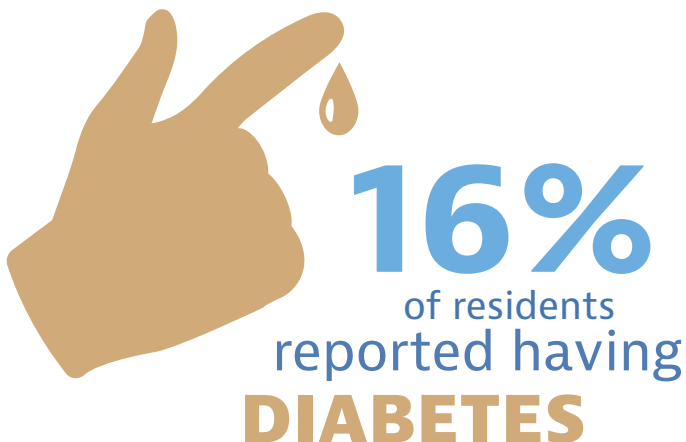


10%



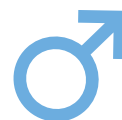
9%

### 2019 Resident Survey Results



### High Risk Profile\*\*

\*\*Lake County 2019 Community Health Needs Assessment Resident Survey



**Caucasian male**



**Overweight or obese**



**Advancing age**

## 2.2 Chronic Disease

### Heart Disease

Percentage of Medicare fee-for-service population with heart disease.

Greater than 1 in 3 American adults have heart disease, and **more than half** are 60 years of age or older.\*

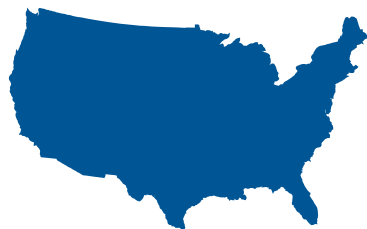
\*Mozaffarian et al. 2016

### National, State, and Local Data\*\*

\*\*Community Commons 2015



N/A



27%



27%



28%

### 2019 Resident Survey Results

**9%** reported having *heart disease*



### High Risk Profile\*\*\*

\*\*\*McClelland et al. 2015, Mozaffarian et al. 2016,  
Lake County 2019 Community Health Needs Assessment Resident Survey



Advancing age

High cholesterol



Smoking



Diabetes



Overweight or obese



Caucasian male



## 2.2 Chronic Disease

### High Blood Pressure

Percentage of Medicare fee-for-service population with high blood pressure.

Upwards of **100 million** Americans currently have **high blood pressure**, or hypertension, and high blood pressure is a considerable **risk factor** for heart disease, stroke, heart failure, kidney disease, and all-cause mortality.\*

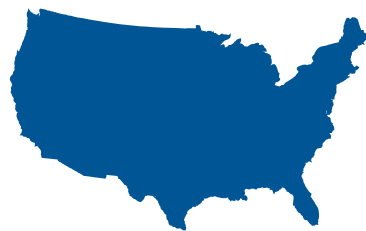
\*Shah and Stafford 2018

### National, State, and Local Data\*\*

\*\*Community Commons 2015



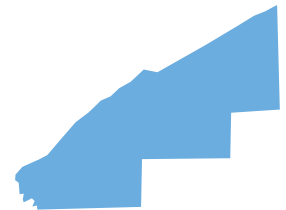
27%



55%



57%



56%

### 2019 Resident Survey Results



**40%**  
of residents  
reported having  
**HIGH BLOOD  
PRESSURE**

### High Risk Profile\*\*\*

\*\*\*Lake County 2019 Community Health Needs Assessment Resident Survey



**African American males**



**Overweight or obese**



**Advancing age**

## 2.2 Chronic Disease

### Obesity

Percentage of adults 20 years of age and older who self-report that they have a Body Mass Index (BMI) greater than 30.

“I think the biggest problem is getting people to realize there is a problem. I have two granddaughters...the 23 year-old is **obese**. She’s now diabetic. She doesn’t realize what this is going to do later on down the line.”

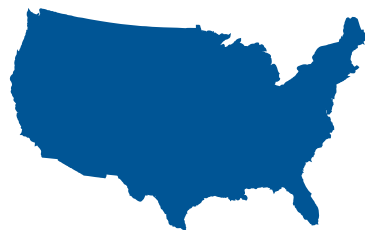
-Focus Group Participant

### National, State, and Local Data\*

\*Centers for Medicare Services 2015



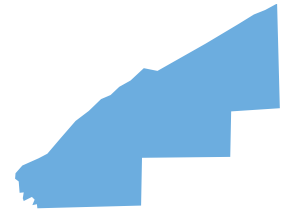
31%



28%

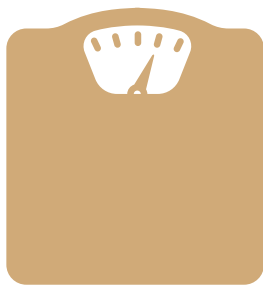


31%



27%

### 2019 Resident Survey Results



**41%**  
of residents  
*surveyed*  
were  
**OBESSE**  
(BMI values >30)

### High Risk Profile\*\*

\*\*Lake County 2019 Community Health Needs Assessment Resident Survey

**40 to 49 years old**

**Higher among minorities**



**Increases with lower education**



**Male**

## 2.3 Injury

### Fall Deaths

Age-adjusted death rate due to falls per 100,000 population.

Unintentional falls are the **leading** cause of death among adults 65 years of age and older.\*

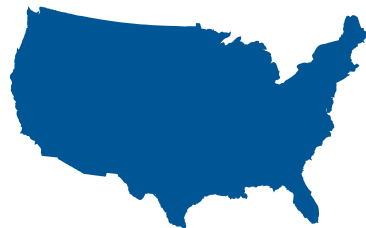
\*Deprey et al. 2017

### National, State, and Local Data\*\*

\*\*CDC WONDER 2016-2017



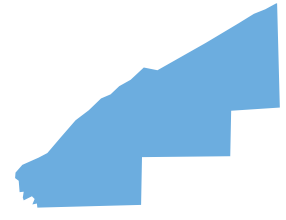
7  
per 100,000



9  
per 100,000



10  
per 100,000



16  
per 100,000

### 2019 Resident Survey Results

**11%** identified *fall deaths* as a **HEALTH CONCERN** in *Lake County*



### High Risk Profile\*\*\*

\*\*\*Lohman et al. 2018



Advancing age



Female



Prior falls

Non-Hispanic

## 2.4 Mental Health and Addiction

### Alcohol Abuse

Percentage of adults 18 years of age or older who report binge or heavy drinking in the past 30 days.

**Alcohol abuse** is associated with depression, heart disease, stroke, cancer, liver cirrhosis, cognitive decline, peripheral neuropathy, decreased bone density, and low blood cell counts.\*

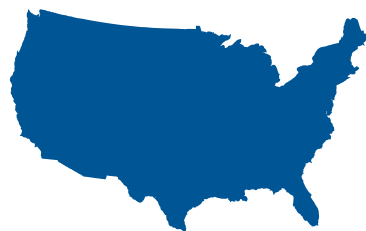
\*Schuckit 2009

### National, State, and Local Data\*\*

\*\*CDC WONDER 2016-2017



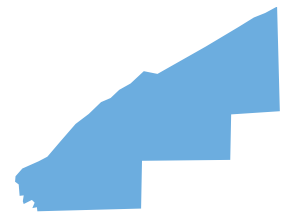
24%



17%



19%



18%

### 2019 Resident Survey Results



### High Risk Profile\*\*\*

\*\*\*Lake County 2019 Community Health Needs Assessment Resident Survey

### Under the age of 30



**Less than high school education**

## 2.4 Mental Health and Addiction

### Alcohol-related Deaths

Age-adjusted alcohol-related death rate per 100,000 population.

Nationally, more than **two million years** of life were lost to an alcohol-related death among individuals 20 years of age and older between 2006 and 2010.\*

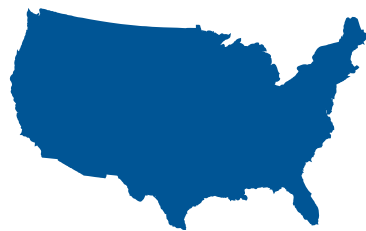
\*Naimi et al. 2019

### National, State, and Local Data\*\*

\*\*CDC WONDER 2016-2017



N/A



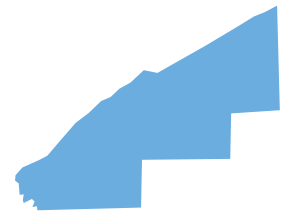
9

per 100,000



9


per 100,000



11

per 100,000

### 2019 Resident Survey Results

 **31%**  
*identified*  
**alcohol-related death**  
as a **HEALTH CONCERN**  
in **Lake County**

### High Risk Profile\*\*\*

\*\*\*Naimi et al. 2019

 Approximately  
**1 in 3**  
**premature DEATHS**  
among 50-64 year olds  
is **alcohol-related**

## 2.4 Mental Health and Addiction

### Alcohol-related Driving Deaths

Percentage of driving deaths with alcohol involvement.

Alcohol-related driving is the **leading cause of traffic deaths** in the United States, and roughly 30% of traffic deaths involve drivers with blood alcohol concentrations above the respective state limit.\*

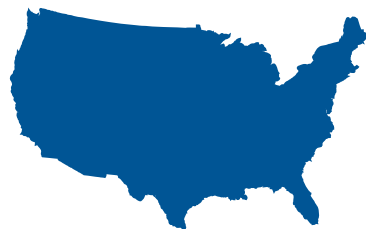
\*Teutsch and Naimi 2018

### National, State, and Local Data\*\*

\*\*National Highway Traffic Safety Administration 2012-2016



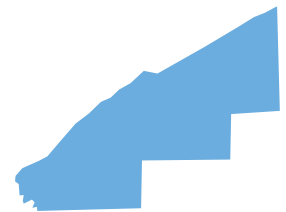
N/A



30%



34%



38%

### 2019 Resident Survey Results

 **5%**  
*reported*  
**driving while**  
**intoxicated**  
*in the past 30 days*

### High Risk Profile\*\*\*

\*\*\*Voas et al. 2012

**16 to 20 years old**

 **Male**

## 2.4 Mental Health and Addiction

### Drug Overdose Deaths

Age-adjusted unintentional drug overdose death rate per 100,000 population.

“I think if you talk to any of our first responders they will tell you the **drug** and alcohol problems in our county are pretty bad. You know you have kids that are putting hash marks on their arm when they are brought back from an **overdose**. Our response and approach isn't right. I don't know if we have to be more severe or more understanding, but let's face it, a slap on the wrist doesn't work.”

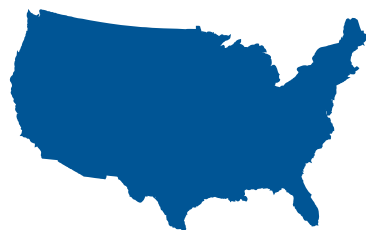
-Focus Group Participant

### National, State, and Local Data\*

\*CDC 2017, ODH 2017



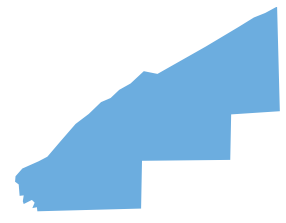
11  
per 100,000



22  
per 100,000



42  
per 100,000



44  
per 100,000

### 2019 Resident Survey Results

**78%** of residents *and* **100%** of community leaders identified **drug overdose deaths**



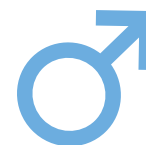
as a **HEALTH CONCERN** in **Lake County**

### High Risk Profile\*\*

\*\*LCGHD 2018



Single



Caucasian male

25 to 54 years old



Labor, maintenance or trade occupation



## 2.4 Mental Health and Addiction

### Mental Health

Age-adjusted mean number of mentally unhealthy days reported in past 30 days.

“It’s a definite **problem**...students that are cutting themselves, depression...and we can’t get **enough services** for our students, we have too many that need services.”

-Focus Group Participant

### National, State, and Local Data\*

\*County Health Rankings 2015



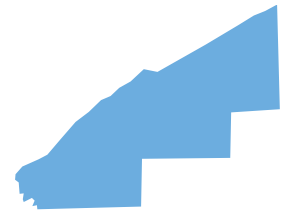
N/A



4 days



4 days



4 days

### 2019 Resident Survey Results



*On average*  
**Lake County**  
*residents reported*  
**5.5 days**  
*of poor*  
**mental health**  
*in the past month*

### High Risk Profile\*\*

\*\*LCGHD 2018



Female

30 to 39 years old

African American

## 2.4 Mental Health and Addiction

### Preventable Teen Deaths

Crude rate of teen deaths resulting from accidents, homicides, and suicides, among individuals 15 to 19 years of age, per 100,000 population.

“If I’m overweight and they’re laughing at me, I’m going to be depressed because I want to fit in or I want to feel pretty. So nobody’s making me feel pretty because mom’s not at home, and I just feel alone. Then the next thing you know, you’re bullied so much, and then they take their own lives.”

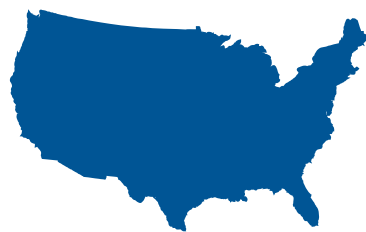
-Focus Group Participant

### National, State, and Local Data\*

\*CDC 2017, ODH 2017



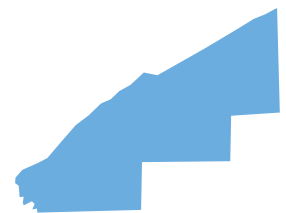
11  
per 100,000



22  
per 100,000



42  
per 100,000



44  
per 100,000

### 2019 Resident Survey Results

**43%** **53%**

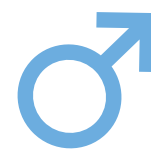
of residents *and* of community leaders  
identified preventable teen

**deaths** as a  
**HEALTH CONCERN**  
in *Lake County*



### High Risk Profile\*\*

\*\*Swedler et al. 2012, Lo et al. 2013, Curtin et al. 2016



**Teen males**  
**are at higher risk for**  
**fatal accidents, homicide**  
**deaths and suicide**

### 3. Prioritization of Health Concerns

Based on the 16 health concerns affecting Lake County residents, the 2019 Lake County Community Health Needs Assessment Steering Committee prioritized these concerns based upon the (1) number of people affected, (2) individual and community impact, and the (3) local capacity to address, in accordance with both Internal Revenue Service Section 501 (r)(3) and Public Health Accreditation Board Standards and Measures, Version 1.5, Measure 5.2.1 L (required documentation 1e). A scale from one to ten was utilized for each of the three domains, and were defined as follows:

**Number of People Affected:** How many individuals does the problem affect, either directly or indirectly?

**Individual and Community Impact:** What are the consequences to both individuals and the community if this issue is not addressed or improved? Consider existing and potential physical, mental, social and economic consequences.

**Local Capacity to Address:** Are there existing organizations, resources and workforce to address this issue? Are there opportunities for new or enhanced collaborative partnerships?

The 2019 Lake County Community Health Needs Assessment Steering Committee mean prioritization scores are included below (Table 2).

**Table 2.** Mean Health Concern Prioritization Scores

Health Concern	Number of People Affected	Individual and Community Impact	Local Capacity to Address	Total MeanScore
Diabetes	8	9	8	25
Obesity	8	8	8	24
Mental Health	8	8	7	23
High Blood Pressure	8	8	7	23
Drug Overdose Deaths	7	8	8	23
Heart Disease	8	8	7	23
Limited Access to Healthy Foods	7	8	7	22
Access to Care	6	7	8	21
Alcohol Abuse	5	7	7	19
Preventable Teen Deaths	6	7	6	19
Fast Food Restaurant Density	7	7	4	18
Preventable Hospitalizations	6	6	6	18
Alcohol-related Driving Deaths	5	6	6	17
Alzheimer’s Disease	5	6	6	17
Alcohol-related Deaths	4	6	6	16
Fall Deaths	5	5	5	15

### 3. Prioritization of Health Concerns

In light of the number of Lake County residents affected, the individual and community impact, and the local capacity to address, the following nine health concerns were selected based on the previously-identified ranking method, and will inform community-based strategies for inclusion in the 2020 to 2022 Lake County Community Health Improvement Plan.

Access to Care

Alcohol Abuse

Diabetes

Drug Overdose Deaths

Heart Disease

High Blood Pressure

Limited Access to Healthy Foods

Mental Health

Obesity

The following health concerns, while also relevant to the community's health, did not qualify for inclusion in the 2020 to 2022 Lake County Community Health Improvement Plan based on the prioritization process.

Alcohol-related Deaths

Alcohol-related Driving Deaths

Alzheimer's Disease

Fall Deaths

Fast Food Restaurant Density

Preventable Hospitalizations

Preventable Teen Deaths

Based on the prioritized health concerns, Lake Health and Lake County General Health District will lead the 2019 Lake County Community Health Needs Assessment Steering Committee, in conjunction with community partner agencies, to identify strategies, objectives, and measurable outcomes to be included in the 2020 to 2022 Lake County Community Health Improvement Plan.

Lake Health and Lake County General Health District are committed to conducting another community health needs assessment in 2022.

The Lake Health Board of Trustees approved the contents of this report on December 7, 2019.

The Lake County General Health District Board of Health approved the contents of this report on December 16, 2019.